

***„Violence Prevention through Urban Upgrading in
Khayelitsha – Social, Situational and Institutional Crime
Prevention: Achievements and Trends of a Bilateral
Financial Cooperation Programme“***

von

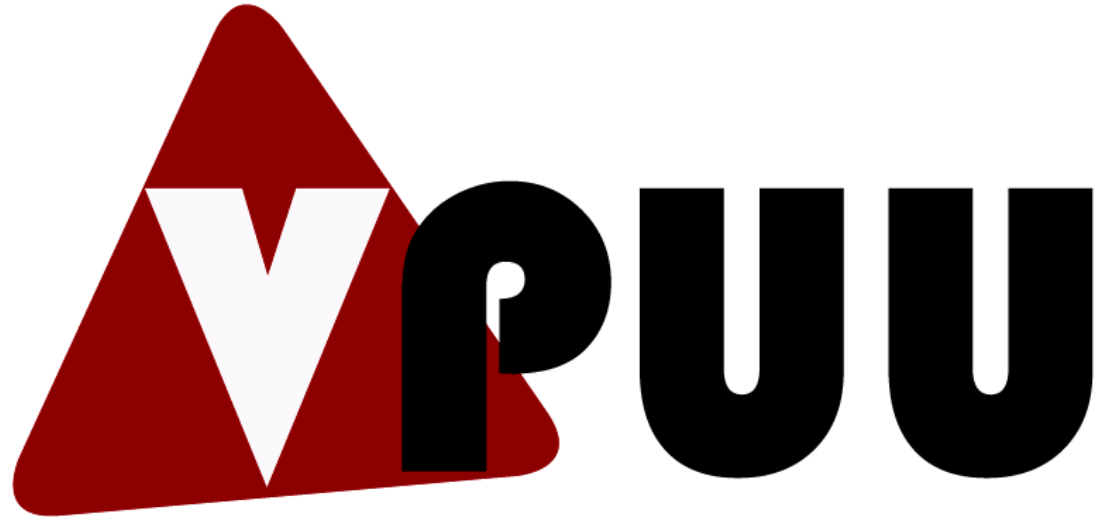
**Chris Giles
Alastair Graham
Michael Krause
Udo Lange**

Dokument aus der Internetdokumentation
des Deutschen Präventionstages www.praeventionstag.de
Herausgegeben von Hans-Jürgen Kerner und Erich Marks im Auftrag der
Deutschen Stiftung für Verbrechensverhütung und Straffälligenhilfe (DVS)

Zur Zitation:

Chris Giles, Alastair Graham, Michael Krause, Udo Lange: Violence Prevention through Urban Upgrading in Khayelitsha – Social, Situational and Institutional Crime Prevention: Achievements and Trends of a Bilateral Financial Cooperation Programme, in: Kerner, Hans-Jürgen u. Marks, Erich (Hrsg.), Internetdokumentation des Deutschen Präventionstages. Hannover 2009, www.praeventionstag.de/Dokumentation.cms/858

Achievements and Trends



Violence Prevention through Urban Upgrading

Achievements and Trends of a Bilateral Financial Cooperation Programme

3rd Annual International Forum within German Congress on Crime Prevention,

June 9, 2009 Hannover Congress Centrum, Hannover, Germany



Violence Prevention through Urban Upgrading



Representatives of VPUU

Mr. Alastair Graham, City of Cape Town

Mr. Chris Giles, AHT Khayelitsha Consortium, Cape Town

Mr. Udo Lange, AHT Germany

Ms. Isabel Huber, KfW Frankfurt

Ms. Verena Willand, KfW Frankfurt

Apologies:

Mr. Michael Krause, AHT Khayelitsha Consortium Team leader

Mr. Sicelo Nkhola, Coordinator Community Facilitators, City of Cape Town



Table of Contents

- **Introducing the VPUU Programme**
- **VPUU Concept and Methodology**
- **Situational Crime Prevention**
- **Social Crime Prevention**
- **Institutional Crime Prevention**
- **Monitoring and Evaluation**
- **Opening of VPUU Facilities**
- **Trends**

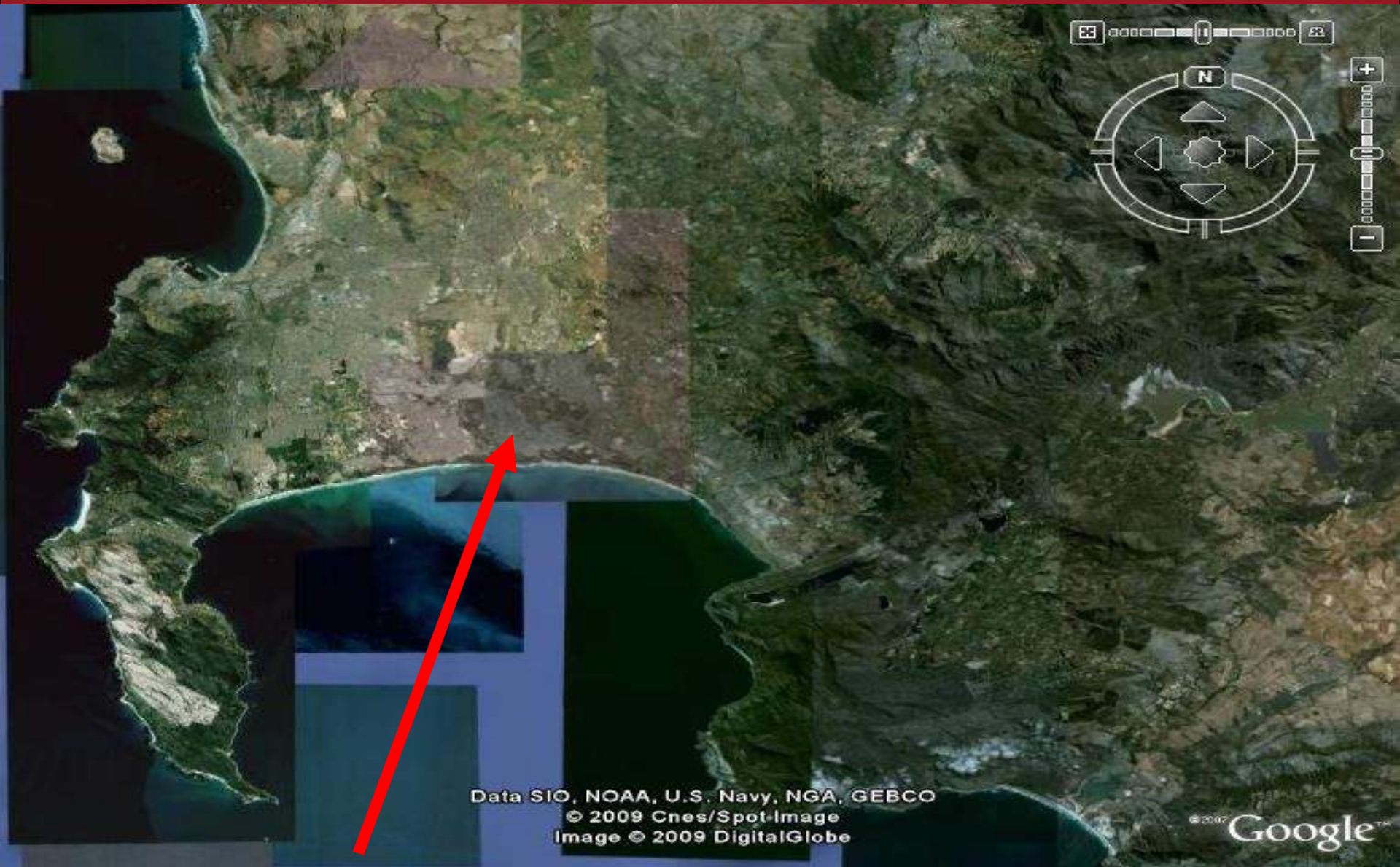


Partnership and History

- **Feasibility Study undertaken with respect to initiating a Violence Prevention through Urban Upgrading Programme in Cape Town, South Africa, 2002**
- **Agreement concerning Financial Cooperation between the Government of the Federal Republic of Germany and the Government of the Republic of South Africa, (10th Dec 2003)**
- **Separate agreement setting up the implementation of the Violence Prevention through Urban Upgrading Programme, VPUU between the City of Cape Town and the German Development Bank, KfW, (26th July 2004)**
- **Commencement of implementation of the VPUU programme in Khayelitsha, Cape Town, (Sept 2005)**



Introducing Khayelitsha Township



Data SIO, NOAA, U.S. Navy, NGA, GEBCO
© 2009 Cnes/Spot-Image
Image © 2009 DigitalGlobe

© 2007 Google™

Zeiger 34°03'34.40" S

18°48'54.47" O

Übertragung ||||| 100%

Sichthöhe 83.70 km

Introducing Khayelitsha Township

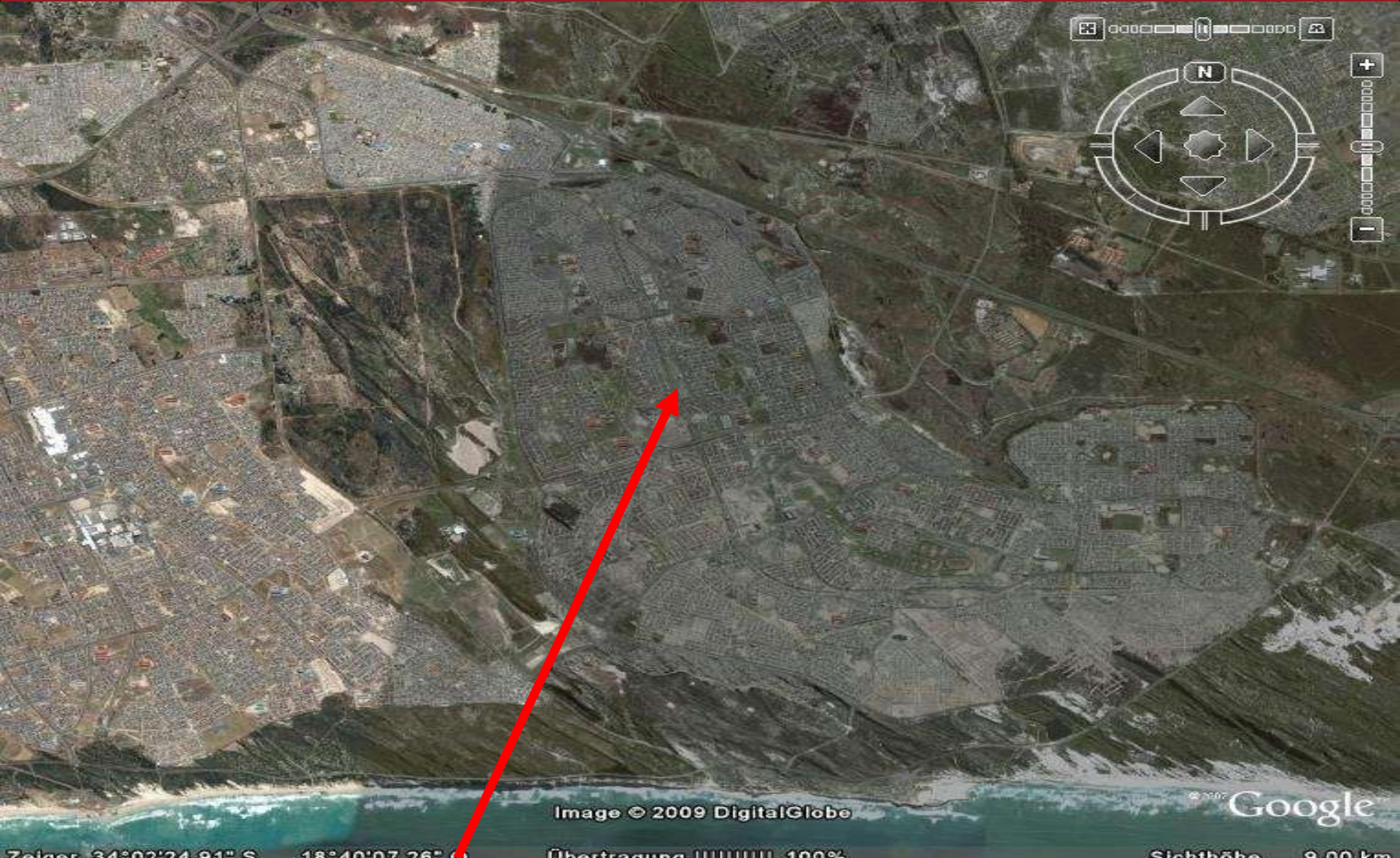


Image © 2009 DigitalGlobe

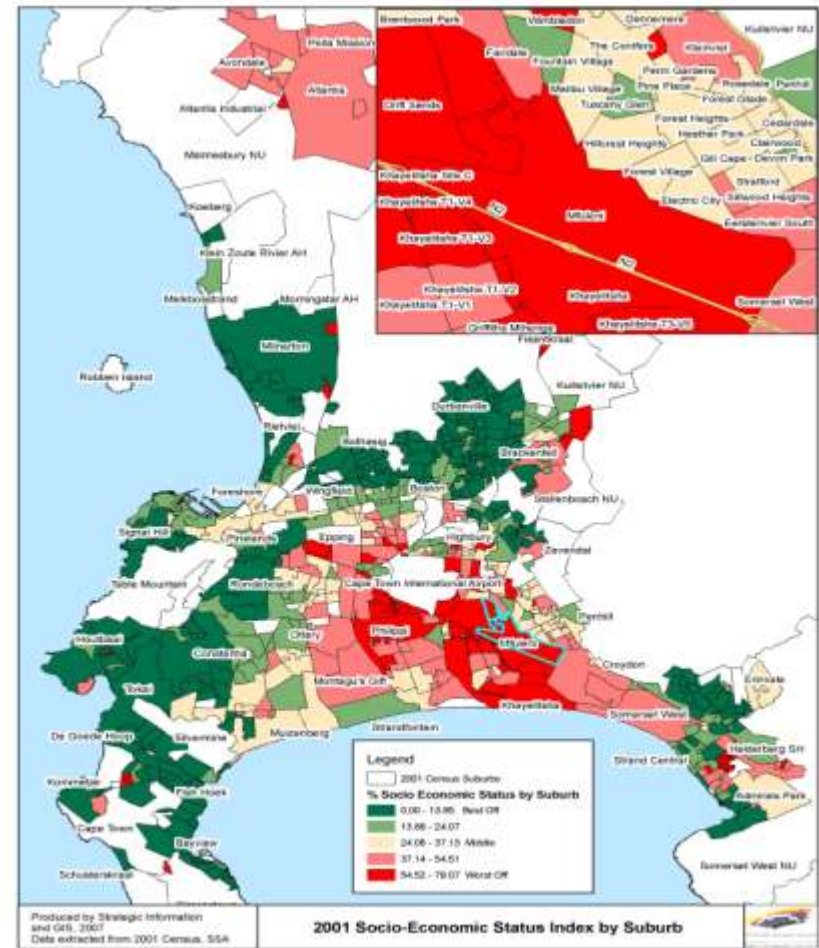
Google

Zeiger: 34°02'24.91" S, 18°40'07.26" O

Übertragung: 100%

Sichthöhe: 9.00 km

Introducing Khayelitsha Township



Introducing Khayelitsha Township

Harsh reality on the ground:

Murders in Harare (as one part of Khayelitsha)
April 2007 to March 2008

175 murders (plus 73 attempted, plus 532 GBH)

To compare

Murders in Western Cape Province in same period

2.836

Murders in South Africa in same period

18.487



Reality of Violence



Goals of VPUU Programme

Within identified Geographic Focus Areas:

- **Increase safety**
- **Upgrade low income neighbourhoods**
- **Improve socio - economic situation**

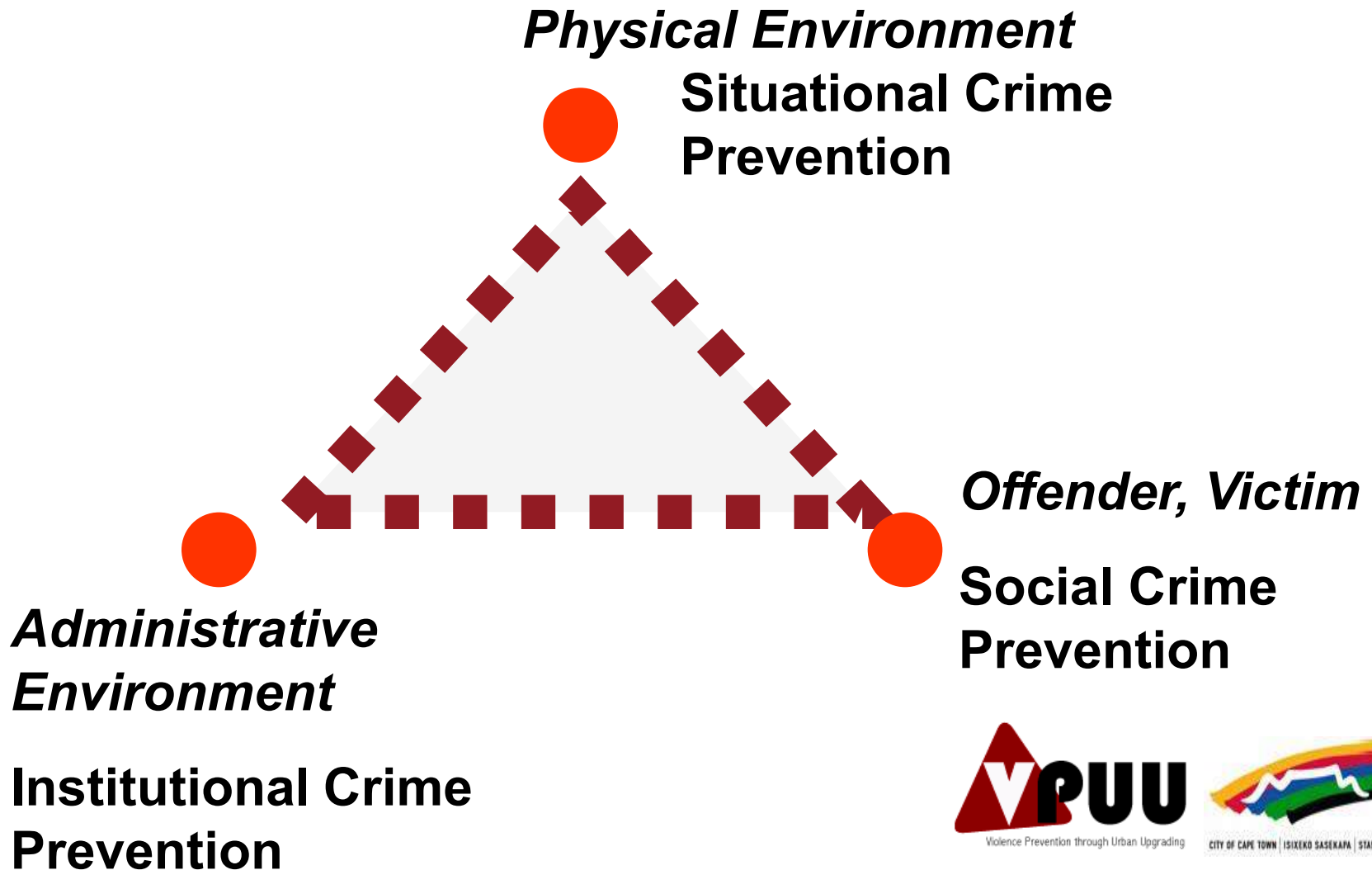


Violence Prevention through Urban Upgrading



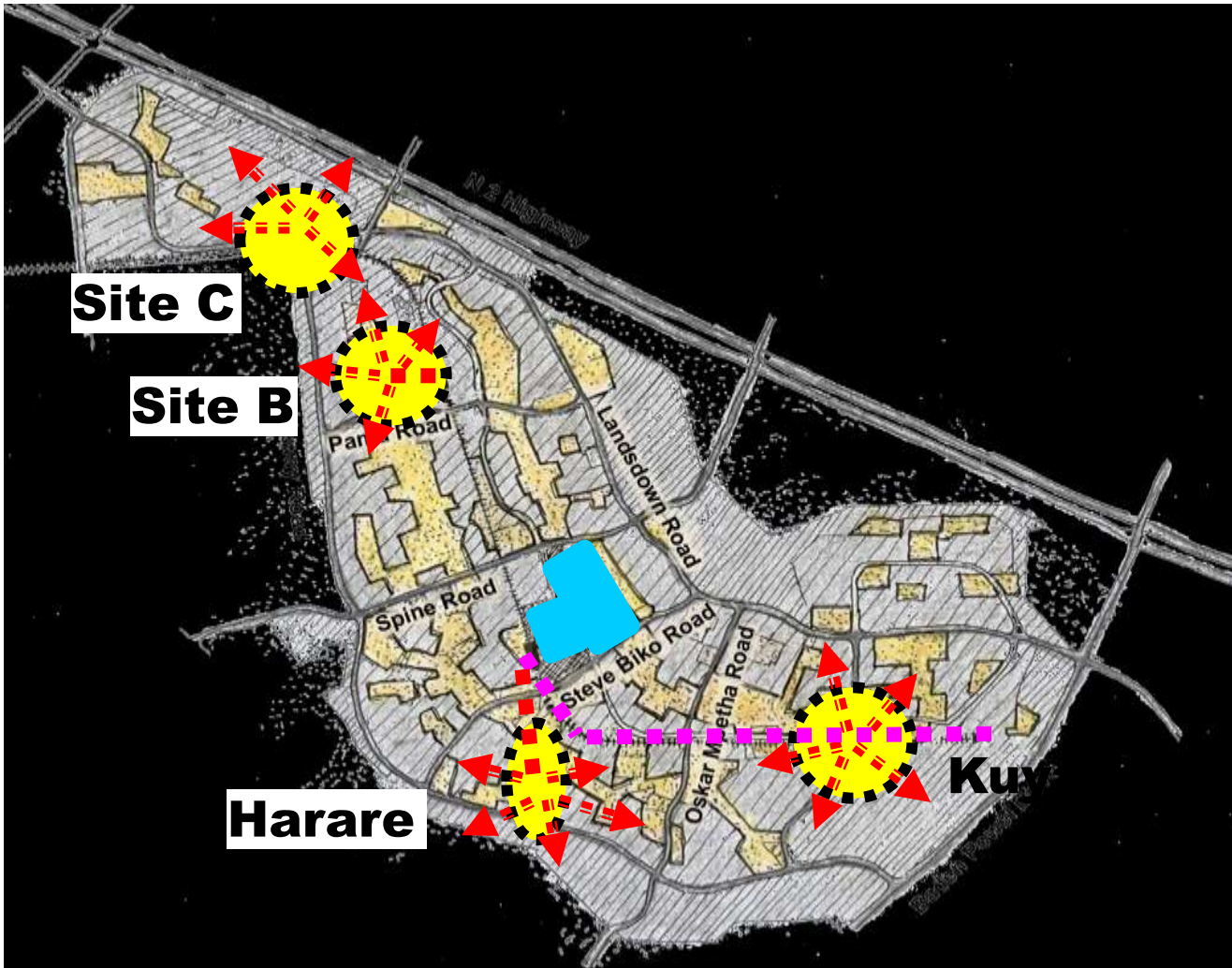
CITY OF CAPE TOWN | ISIXEKO SASEKAPA | STAD KAAPSTAD

Methodology



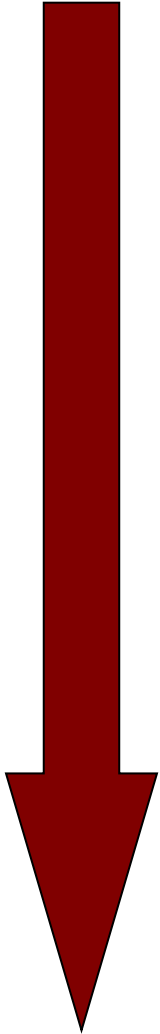
Methodology: Safe Node Areas

South Africa

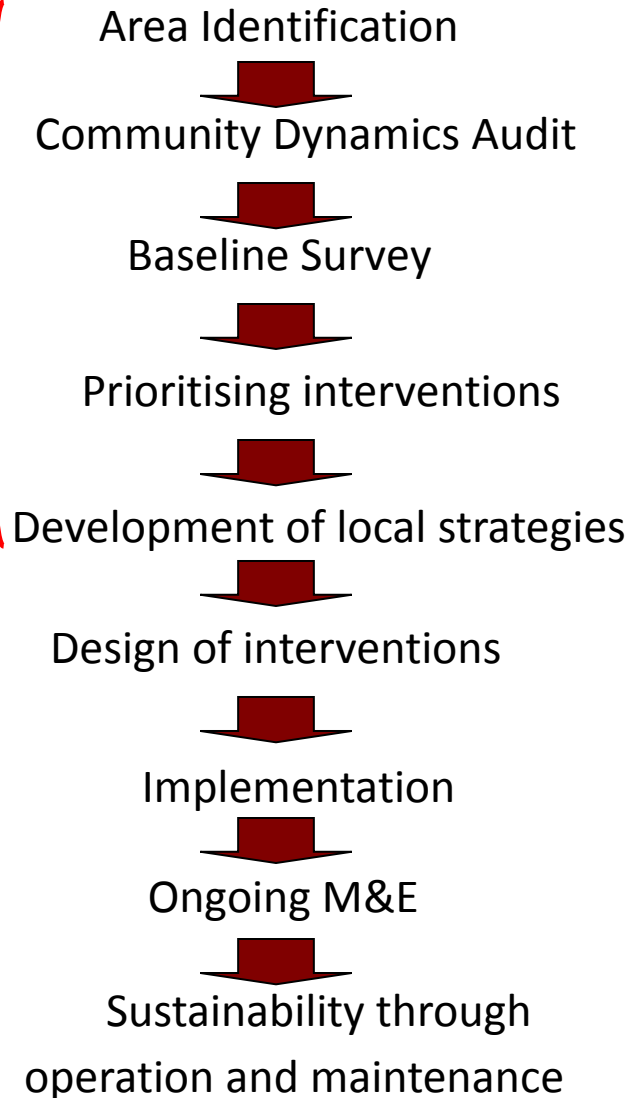


Methodology: Process

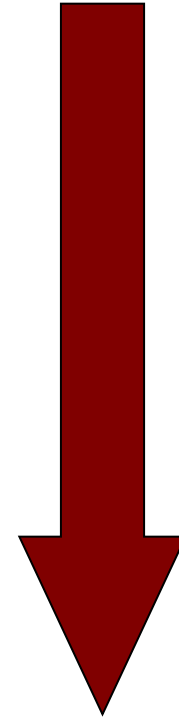
Community Participation



Social Compact



Capacity Building
Mentorship



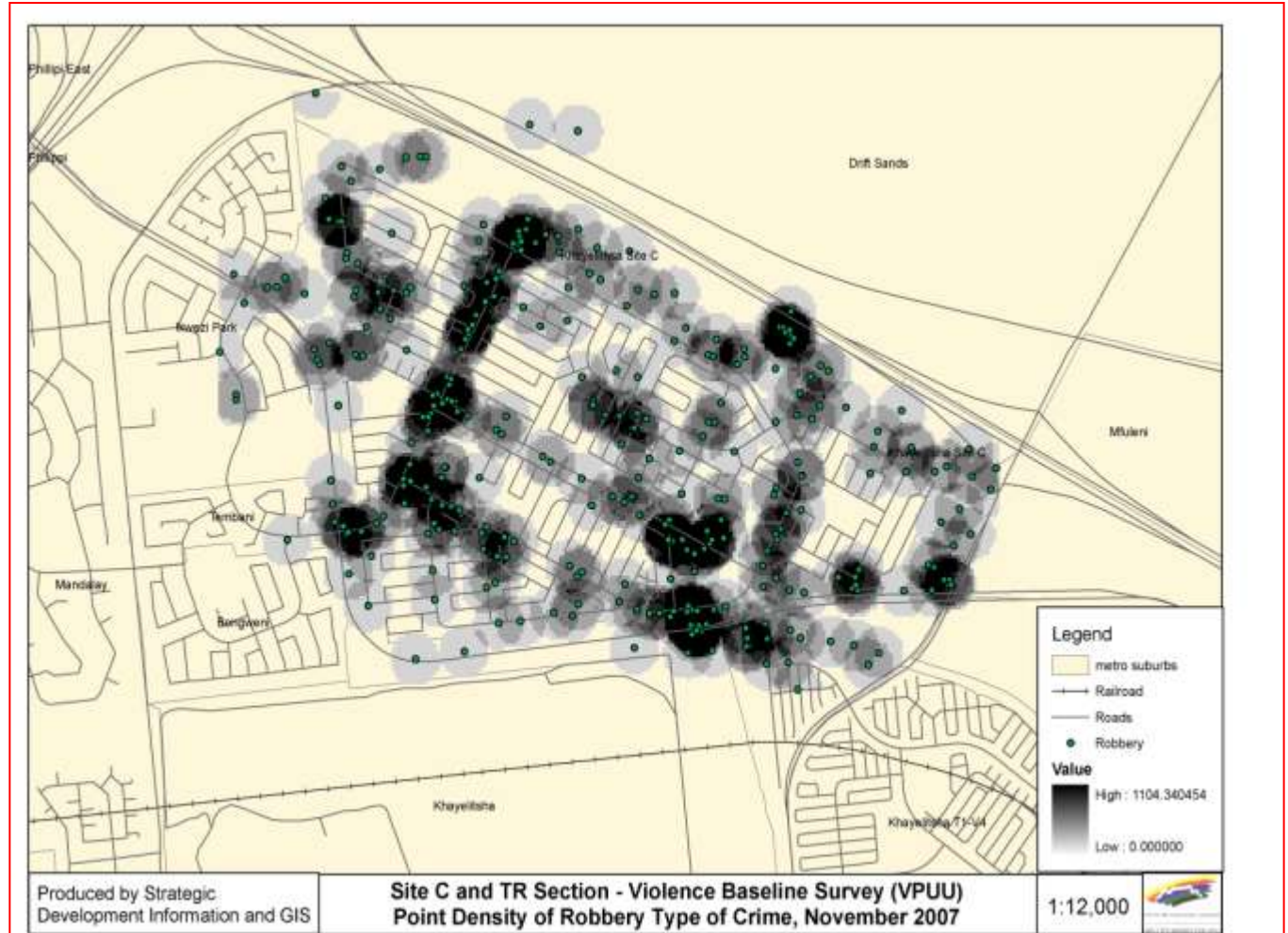
- Trust,
- Accountability,
- Set of principles,
- Developmental approach

Site C Area Identification



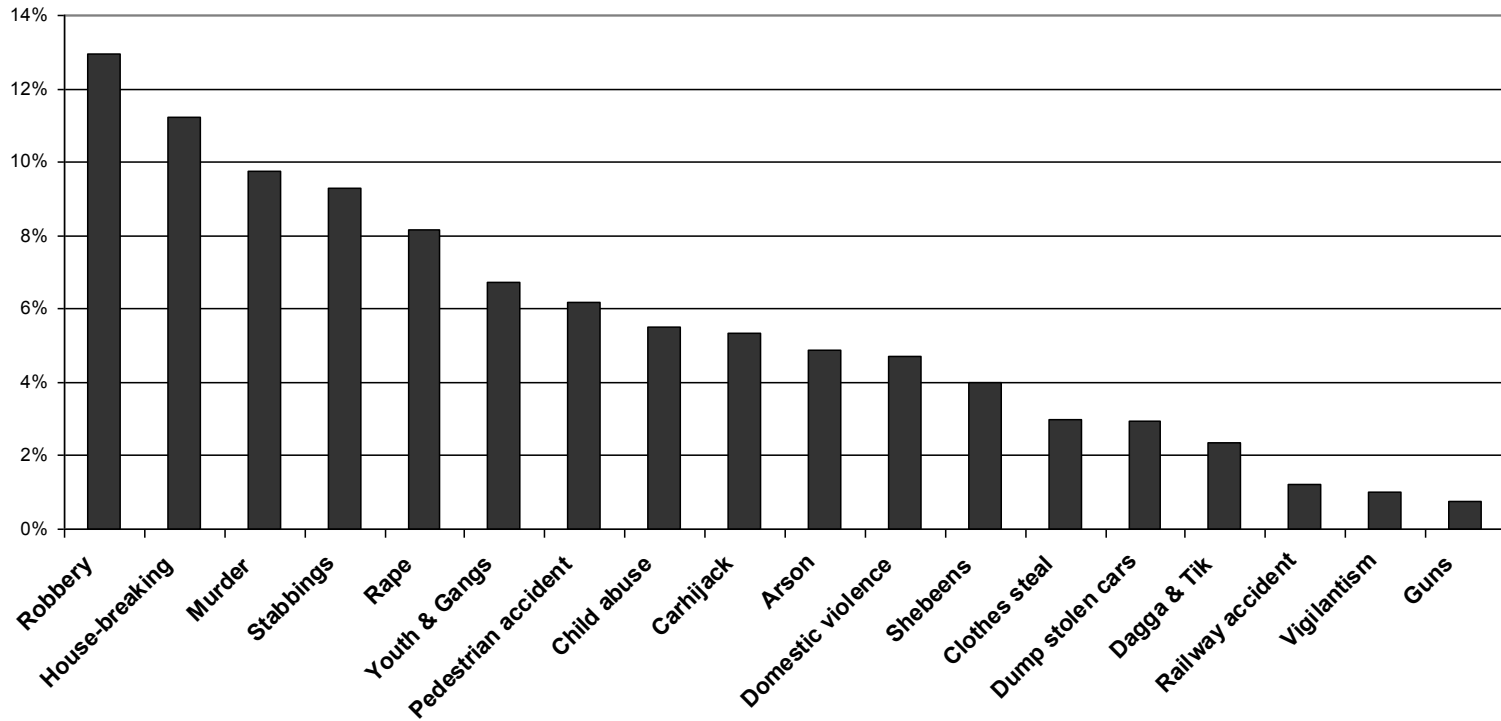
Site C: Nolungile Station Precinct

Site C Baseline Survey



Site C Crime Survey

Priority crime and violence



Site C Business Survey

- 10,819 sites visited
- 2,079 in-depth interviews were conducted in phase two
- 98 percent of all identified businesses
- Survey was conducted between 4 February to 29 March 2008.



Violence Prevention through Urban Upgrading

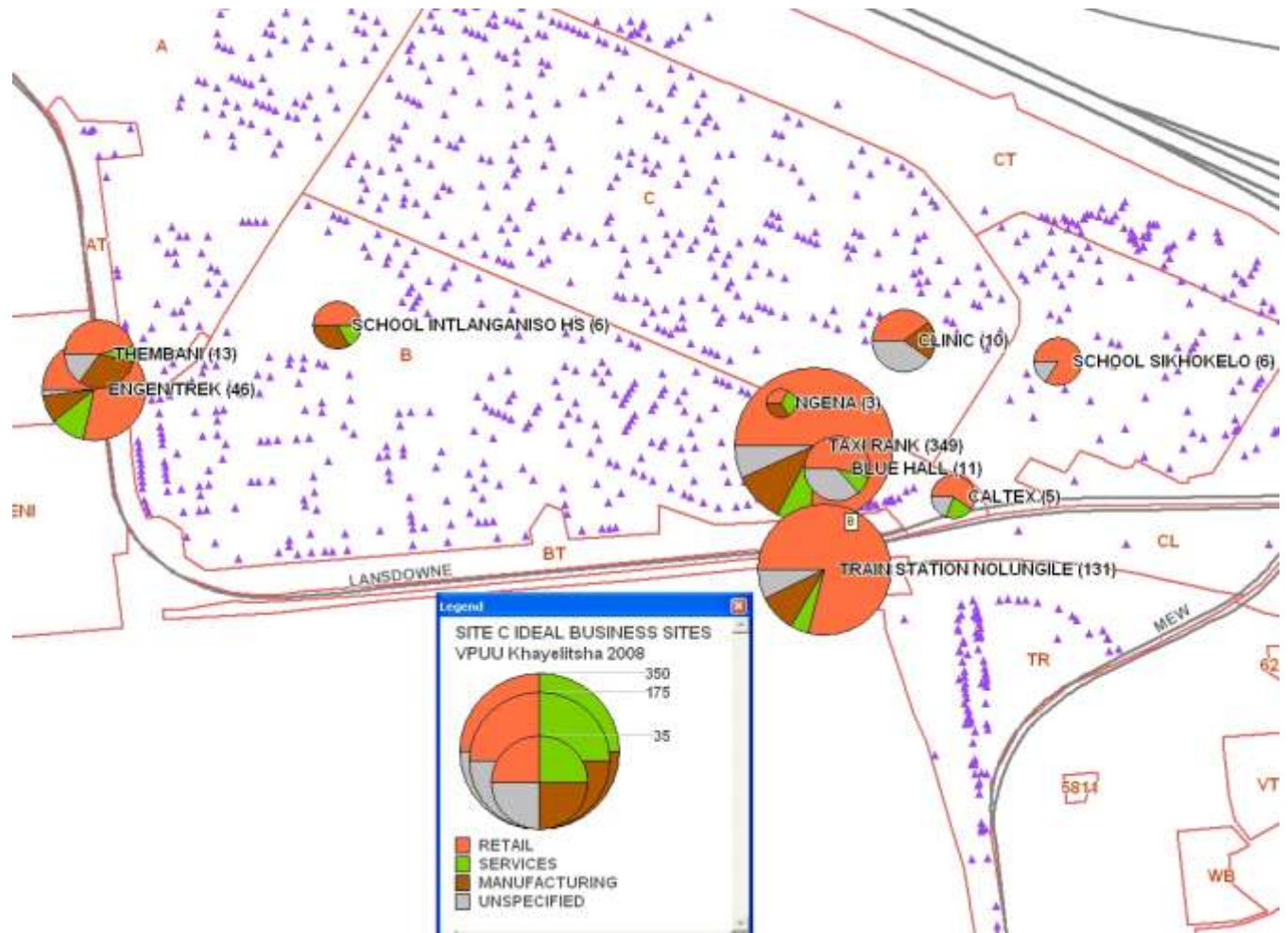


CITY OF CAPE TOWN | ISIXEKO SASEKAPA | STAD KAAPSTAD

Site C Business Survey



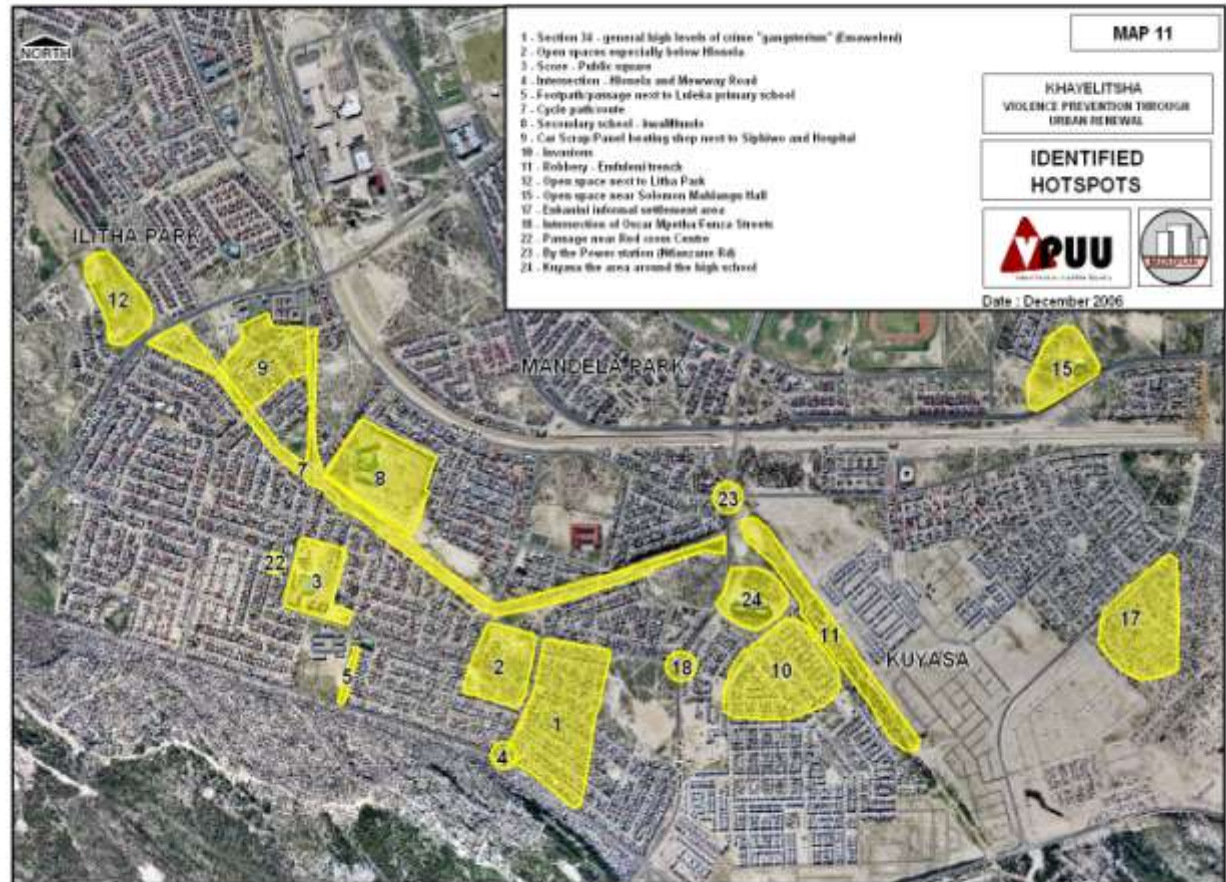
Site C Business Survey

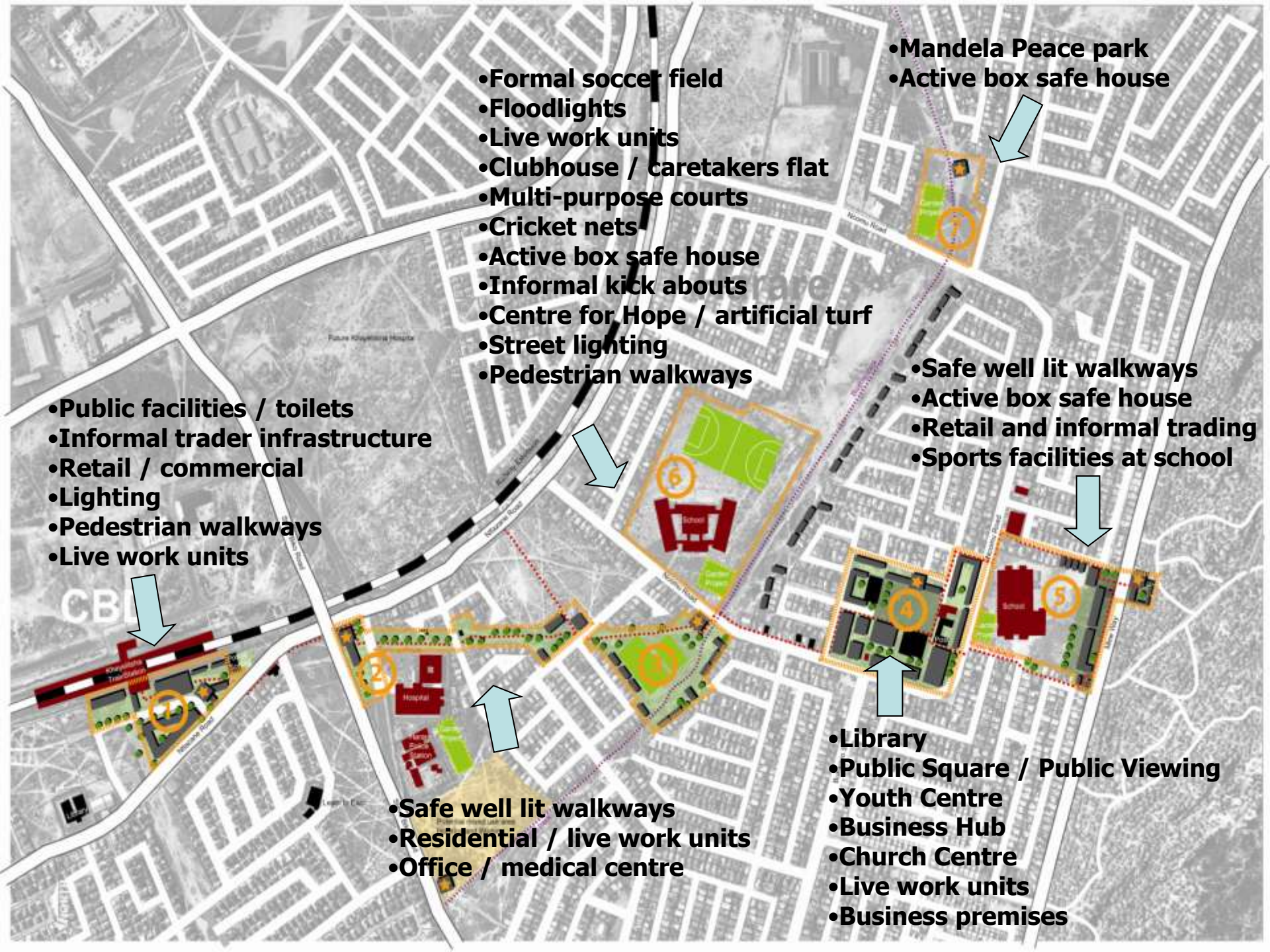


Situational Crime Prevention

Item	Desired outcome
Design and Construction of SNA's	<ul style="list-style-type: none">• Active Boxes along major pedestrian walkways,• safe walkways,• safe public urban spaces,• public buildings,• business opportunities,• work live units,• in fill housing,• sport and recreation facilities in public space and on school premises

Situational Crime Prevention





- Formal soccer field
- Floodlights
- Live work units
- Clubhouse / caretakers flat
- Multi-purpose courts
- Cricket nets
- Active box safe house
- Informal kick abouts
- Centre for Hope / artificial turf
- Street lighting
- Pedestrian walkways

- Mandela Peace park
- Active box safe house

- Public facilities / toilets
- Informal trader infrastructure
- Retail / commercial
- Lighting
- Pedestrian walkways
- Live work units

- Safe well lit walkways
- Active box safe house
- Retail and informal trading
- Sports facilities at school

- Safe well lit walkways
- Residential / live work units
- Office / medical centre

- Library
- Public Square / Public Viewing
- Youth Centre
- Business Hub
- Church Centre
- Live work units
- Business premises



Situational Crime Prevention

Urban Design Principles for a safe Neighbourhood

- Guideline that allows decision makers to develop a vision along the values of integrated planning for safe neighbourhoods
- Training courses for councillors, decision makers, to be used as standard publication from City for developments in township projects



Violence Prevention through Urban Upgrading



CITY OF CAPE TOWN | ISIXEKO SASEKAPA | STAD KAAPSTAD

Social Crime Prevention

- Complimentary to Situational and Institutional Crime Prevention pillars
- Promotes understanding and use of resources
- Rapid implementation: 'introduces' VPUU
- Increases number of beneficiaries
- Widens the area of impact
- Service delivery
- Training, mentoring and co-ordinating existing structures and organisations



Violence Prevention through Urban Upgrading



CITY OF CAPE TOWN | ISIXEKO SASEKAPA | STAD KAAPSTAD

Social Crime Prevention

- Gender-based Violence: Anti Rape
- Legal Aid
- Civilian Patrols, Street Committees
- Social Development Fund
- Early Childhood Development
- Prevention of Violence in Schools
- Develop local M&E capacity



Social Crime Prevention



Gender
Violence

Simelela
Network
agree how to
work in
unison

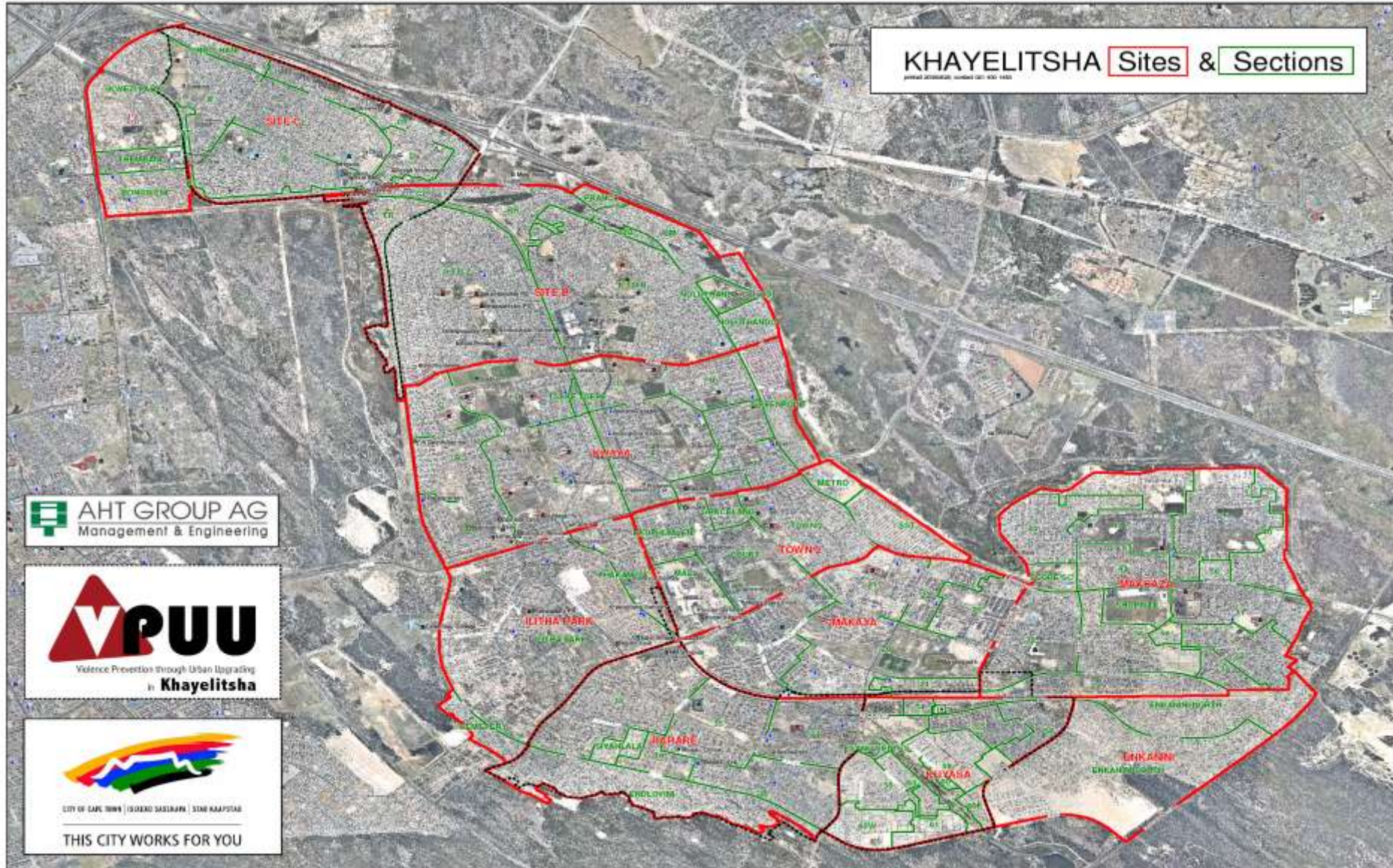


Prevention through Urban Upgrading



CITY OF CAPE TOWN | ISIXEKO SASEKAPA | STAD KAAPSTAD

Identifying Local Boundaries



Partnership: scope and challenge

- 15 partner organisations
- Department of Justice --- 2-person informal
 - 673 Protection Orders, 14,768 Public education
 - 600 women 150 children 75 men each day
- Attrition rate now is 43%
- Conviction rate now is 5%
- No incidence data for planning
- Legislated minimum stds not implemented
- GOAL: JUSTICE CENTRE



Institutional Crime Prevention

Item	Desired outcome
Operation and Maintenance	facilities and spaces are operated by local organisations to ensure sustainability
Business Dev. Skills	local business sector has improved
M&E	feedback, assessment of action, review, adaptation
Mainstreaming violence prevention	integrated planning budgeting, implementation
Community Participation	Dialogue with community on what, how, when

Institutional Crime Prevention

- Community Delivery of Services Good Practice Guide
- Preparing community groups to manage facilities
- Financial sustainability plan for facilities
- Establishment of Khayelitsha Community Trust as owner of the facilities
- Local Economic Development Strategies based on baseline Business Survey



Violence Prevention through Urban Upgrading



CITY OF CAPE TOWN | ISIXEKO SASEKAPA | STAD KAAPSTAD





Monitoring and Evaluation

- Established a M+E Framework based on a KfW Logframe
- Focus is on participatory impact (indirect benefits) monitoring
- Projects of the 3 Components mentioned and VPUU as a whole are continuously monitored against indicators to inform VPUU Management and Partners
- Making decisions on the basis of performance can be perceived by leaders as a challenge to their authority
- There is also little experience within the community with their pressing needs to deal with repeated surveys asking about safety (perceptions)



M+E: Main Elements

- KfW Logframe
- Phase II: VPUU set of indicators, data flow, review (overview on current status) [Indicators surveillance](#)
- new VPUU Excel-Table Impact Monitoring



M+E: Service Provider



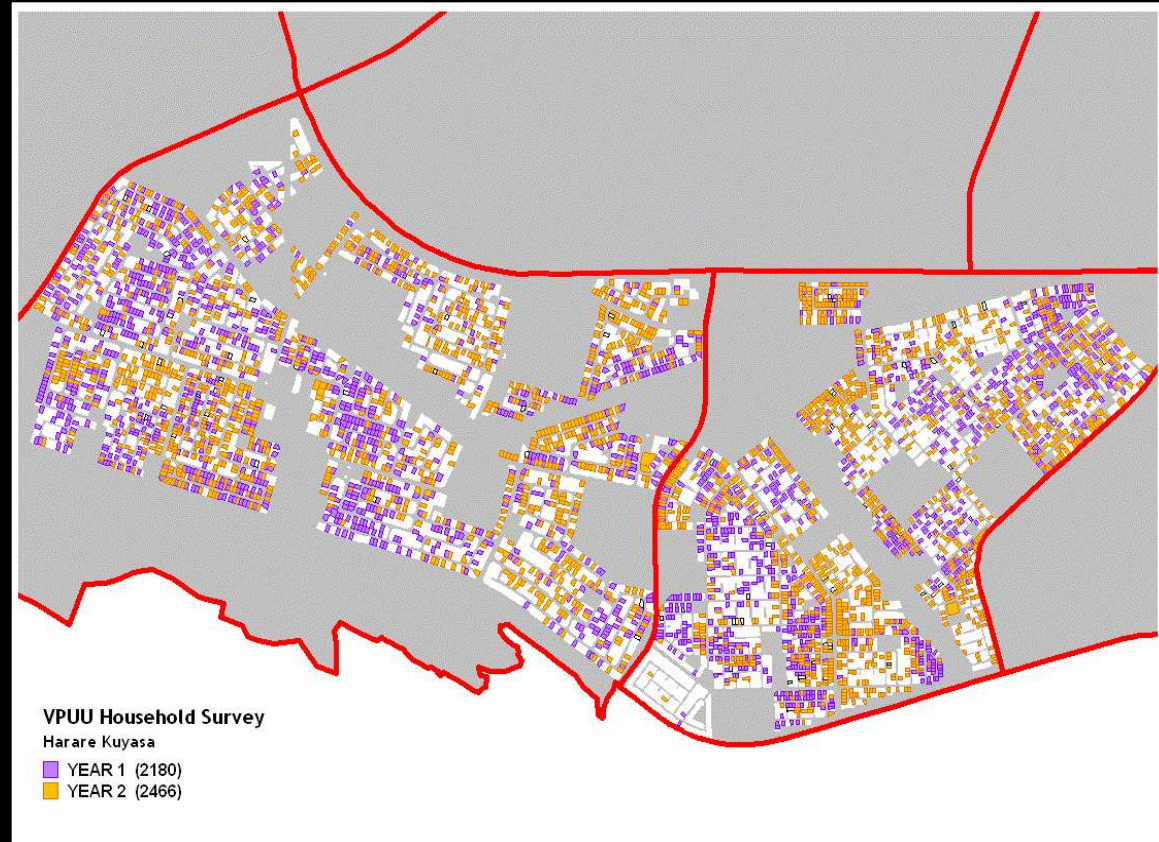
Lithe Tha Researchers CC is a registered Closed Corporation

It is an all-woman team working in all 4 VPUU SNA

Household Survey weekly stratified random samples of 50 sites, 2180 in 2007, 2466 in 2008



M+E: Household Survey



M+E: Service Provider

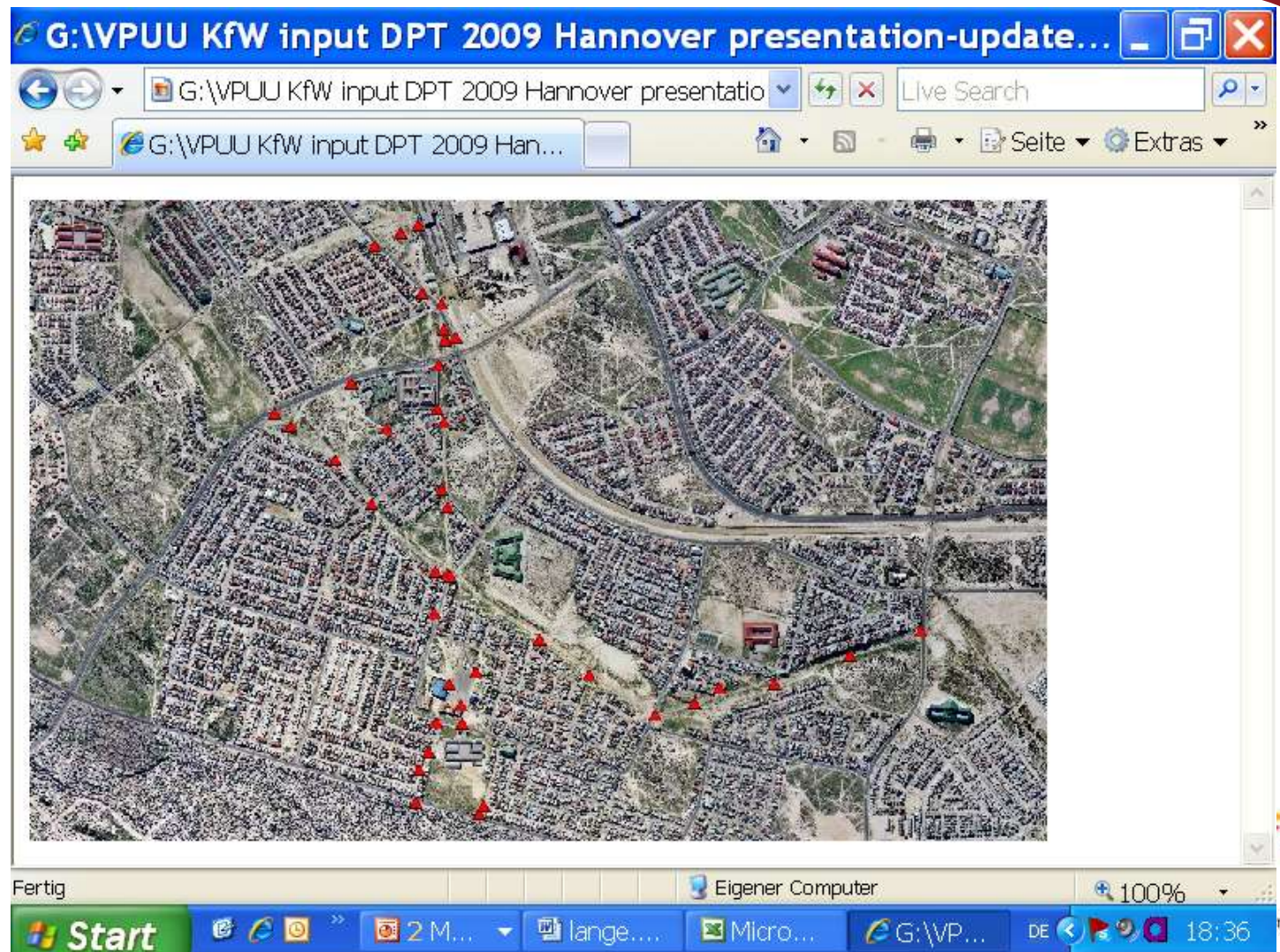
Monument Photos

Status: 40 MP, 70 shots/month. [MP's](#)

- making change visible, encourage participation, pride in/care for new resources
- Reporting, poster, DPT, display in Active Boxes
- on **VPUU homepage**, see: www.vpuu.org



Map Monument Photos



Example Position 11 b

Macromedia Flash Player 6

Datei Ansicht Steuerung Hilfe

→ Wechseln zu

“VPUU intervention Landscaping Precinct 3 in Harare:

This area was identified by community members as one of the worst crime hotspots in 2006 during the baseline survey.

A major urban park was developed out of an unsightly and neglected engineering feature (stormwater detention pond) to create a significant public amenity at a strategic location in Harare.

Landscaping Precinct 3, Harare

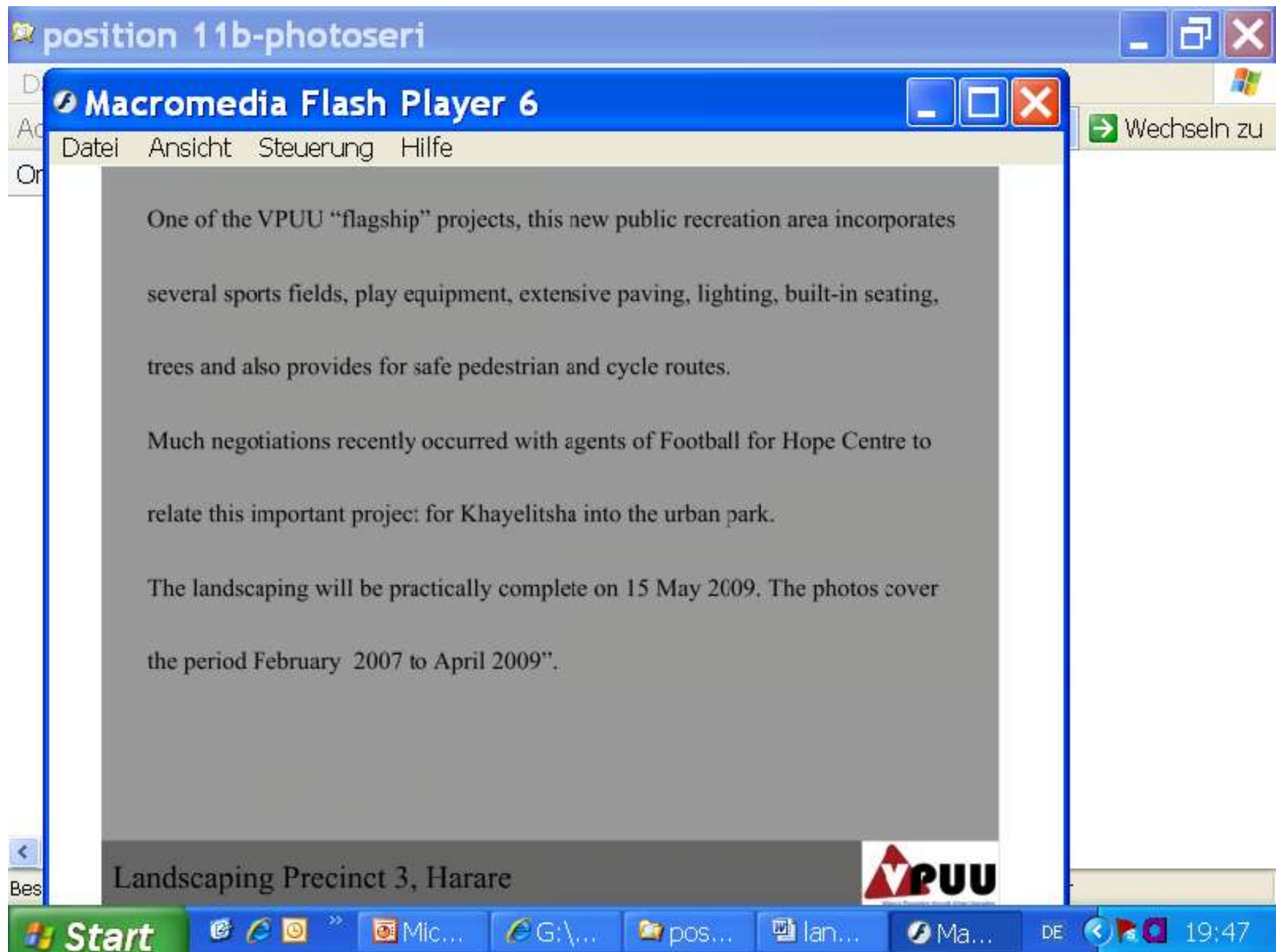
VPUU
Vision Powering Urban Regeneration
- Khayelitsha

Beschreibung: Macromedia Flash Player 6.0 r21 Firma: Macromedia, Inc. Datei 4,37 MB

Eigener Computer

Start | Micros... | G:\WP... | positi... | Macro... | DE | 19:45

Example Position 11 b





2007/06/18
11:36:18



2008/08/15

08:52:44



2008/09/22
09:56:43



2006/10/03
09:25:41



2008/12/02
21:09:12



2009/02/18
08:59:53



2009/05/19
08:50:58

M+E: Other Examples

- Baseline Surveys: hotspots, crime mapping (data, perceptions) [HK hotspotHK](#) [hotspotCTR](#) [priorities](#)
- Household Survey / Selected Household Survey results [HHS Graphs](#)
- Dangerous Routes / Information to SAPS [Routes map](#) [diurnals](#)
- Info from Patrolling [no. equip](#) / Mosaic [cases](#) / Legal Aid [cases](#) / SDF [finsum](#)
- other important data streams: xenophobic attacks [xeno](#) early childhood development (ECD) provision [ECD](#) lighting standards [Light](#) official boundaries [bounds](#) local place-name boundaries [KL MB](#)



Household Survey Results

Microsoft Excel - Graphs May 2009.xls

Datei Bearbeiten Ansicht Einfügen Format Extras Daten Fenster ?

Favoriten | Wechseln zu |

H26

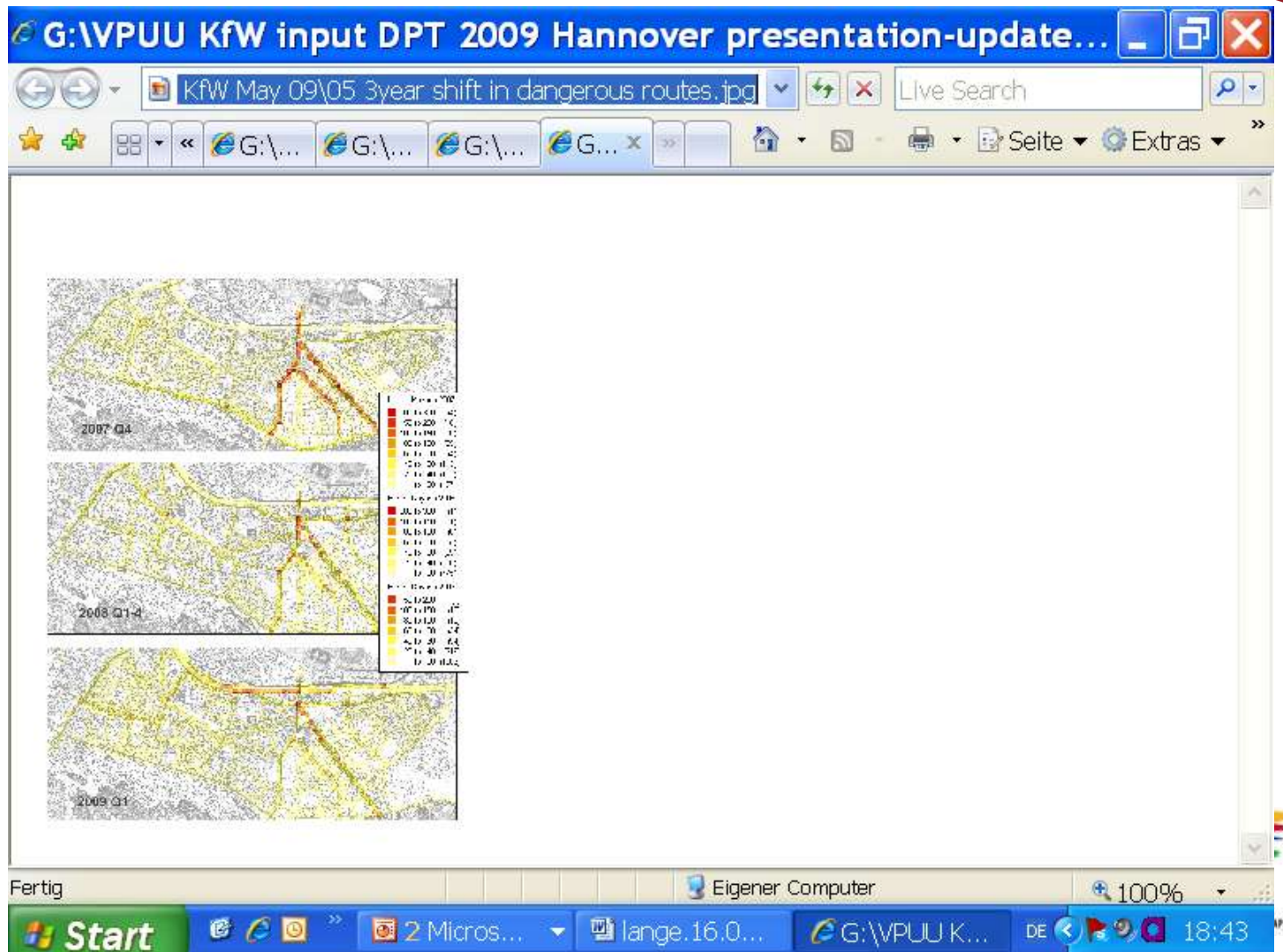
	A	B	C	D	E	F	G	H	I	J
1	Rape									
2	Shape		Gender		Vul.age		Time		Day	
3	Area	77	Both		<6	35	00-06	19	Weekday	27
4	Point	4	Female	100	7-12	19	06-12	12	Weekend	42
5	Route	19	Male		13-17	23	12-18	19	Any	31
6					18-25	19	18-24	50		
7					26-35	4				
8					36-55					
9					56+					
10										
11										
12	Children: Robbery									
13	Shape		Gender		Vul.age		Time		Day	
14	Area	69	Both	164	<6	21	00-06	23	Weekday	172
15	Point	15	Female	13	7-12	97	06-12	137	Weekend	7
16	Route	98	Male	6	13-17	19	12-18	19	Any	4
17					18-25	3	18-24	3		
18					26-35					
19					36-55					
20					56+					

RatingsSoc All / RatingsSoc Qtr / Raw Data / Safety per month / Day & Night / Safet

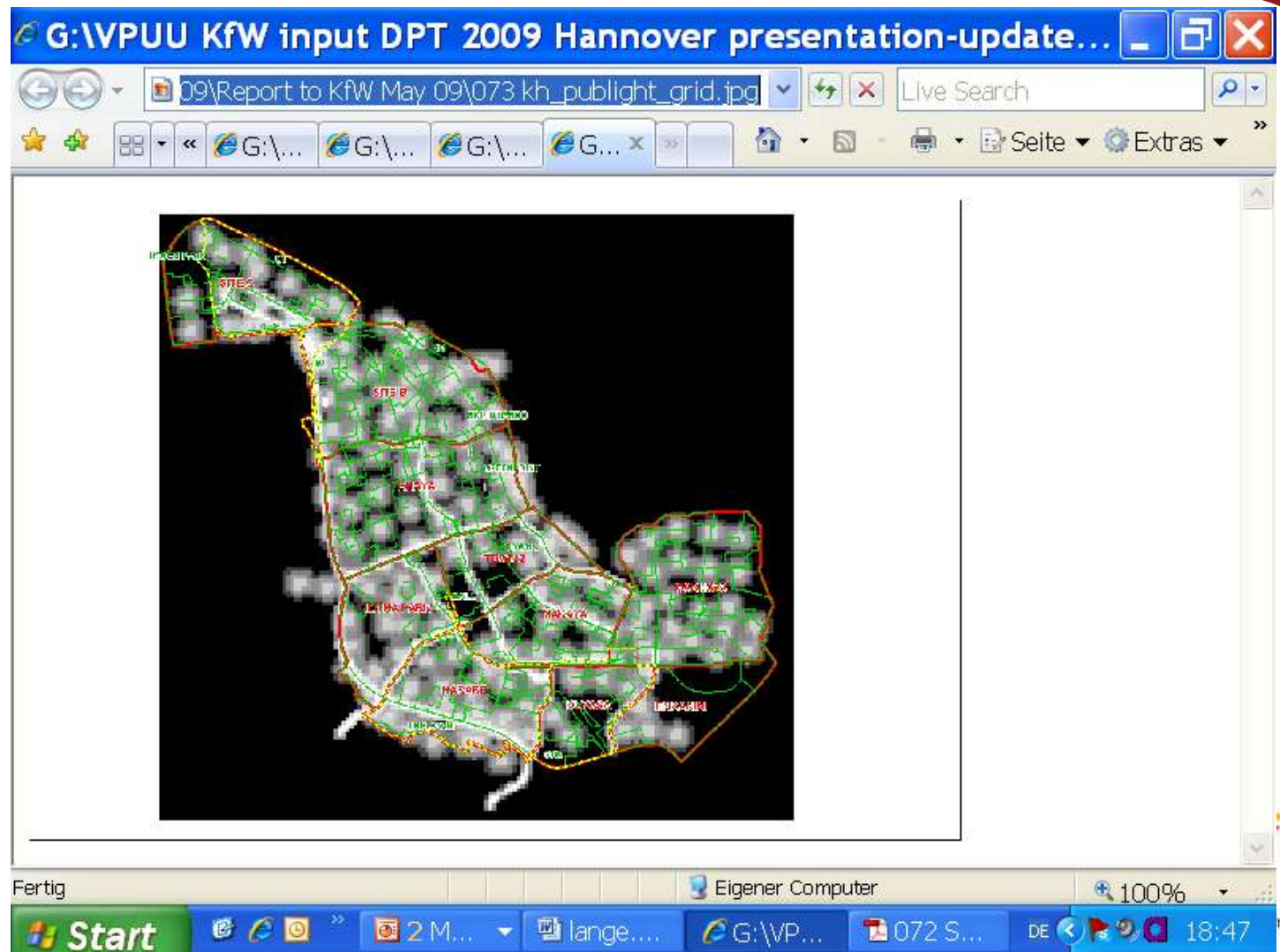
Bereit

Start | 2 M... | lange... | G:\VP... | Micro... | DE | 18:42

Dangerous Routes Map



Lighting Standards



M+E: Selected Findings

- M+E informs Reference Group and PMU, e.g. planning of SNA: via baseline and household surveys, patrolling reports, perception of municipal services
- M+E data interesting for 3rd parties: xenophobic violence, dangerous routes, preferred trading sites
- Trends of violence and safety perception indicate, that
 - fewer commonly-feared segments, dispersed danger, reduced danger: by route maps [map](#)
 - trend shows reduced fear: by data on perception of crime [HH](#)
 - awareness of situational interventions increasing recently [HH](#)



Opening of Facilities May 2009

The first 3 VPUU facilities were handed over to the Community,

in presence of the Premier of Western Cape Province, the Mayor of Cape Town, the German Ambassador, the Chairperson of the Khayelitsha Development Forum and KfW Representatives, and thousands of residents of Khayelitsha



Opening of Facilities May 2009



Opening of Facilities May 2009



Opening of Facilities May 2009



Opening of Facilities May 2009



Opening of Facilities May 2009



Trends

- **Site C and TR section, two more SNA**
- **Roll out to Manenberg Area**
- **Roll out to Informal Settlements**
- **Second VPUU in Port Elizabeth**
- **Mainstreaming of VPUU within all levels of Government**



Thank you. More information on www.vpuu.org

